

Working in partnership to improve traffic flow to Globe Business Park:



(GBP BID)



(HE)



(BTVLEP)



(BCC)



(WDC)



Buckinghamshire
Fire & Rescue Service

(BF&RS)

LITTLE MARLOW
PARISH COUNCIL



(LMPC)



MARLOW TOWN COUNCIL

(MTC)

Complete the survey at: www.globebusinesspark.co.uk

Background

Why are we doing this?

The aim of this work is to improve peak time access to and from Globe Business Park (GBP) by putting in place integrated measures that will enable traffic movements to operate with greater efficiency.

Congestion on this busy interchange is not only an issue for people working on GBP - but for local traffic too.

How is it being paid for?

The scheme is being funded by the Highways England Growth and Housing Fund (£1.18m) and additional money from BCC (£250k), WDC (£250k) and BTVLEP (£63k).

How have the measures been developed?

They have been developed by a steering group of partners from BCC (Highways Authority), WDC, GBP BID, LMPC and MTC.

The three measures featured in this consultation are taken from a longer list and have been chosen because they collectively deliver an integrated solution and will be relatively easy to implement. These measures are subject to detailed design and costing. This means elements may change as a result of this.

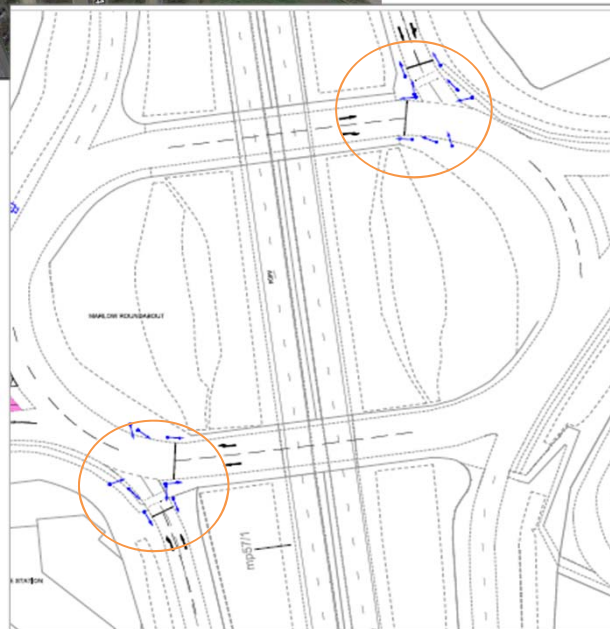
We are also using this consultation as an opportunity to ask about a related measure that could be implemented in the future to help improve peak time traffic flow further.

Next steps?

This consultation runs from **Monday 7 January to the Friday 1 February 2019**. The results will be analysed and shared with HE and BCC to inform their detailed design work. We anticipate work starting on site during 2019.

Complete the survey at: www.globebusinesspark.co.uk

Measure 1: Traffic signals



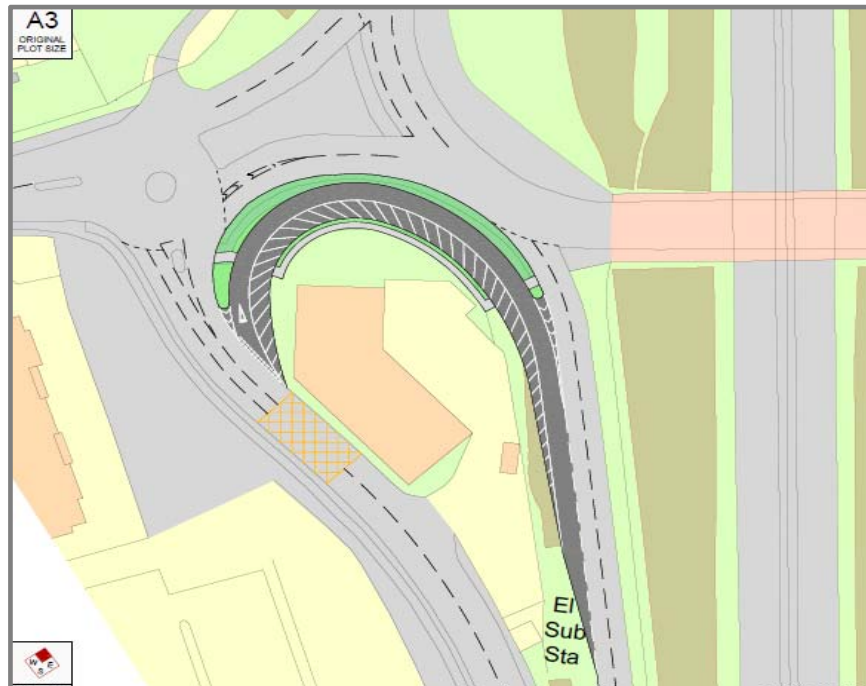
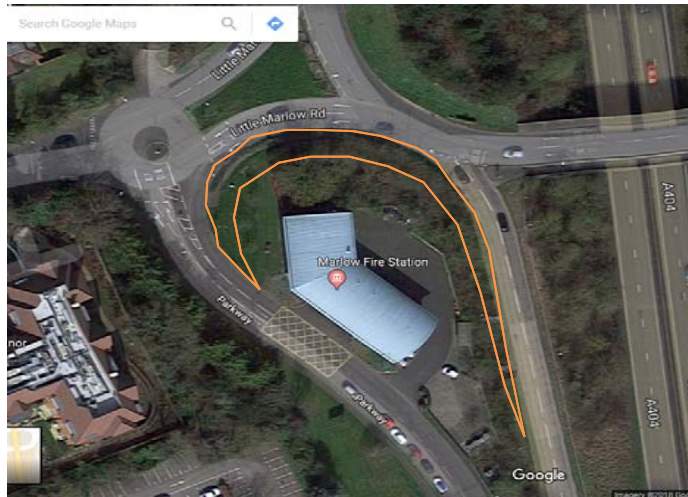
Traffic signals can improve traffic flow, and traffic modelling for Westthorpe Interchange confirms signals will help.

Signals would be located to control the movement of vehicles on the slip roads where traffic joins the A4155 from the A404.

What we would like to know:

- Your thoughts on the introduction of traffic signals on the Westthorpe Interchange.
- Feedback on whether signals should be **full time** or **part time** (peak time in the morning and evening only - traffic modelling shows this to be most effective).

Measure 2: **New slip road by the Fire Station**



This new slip road will improve access from the northbound A404 slip road to Parkway. Traffic modelling shows this works well.

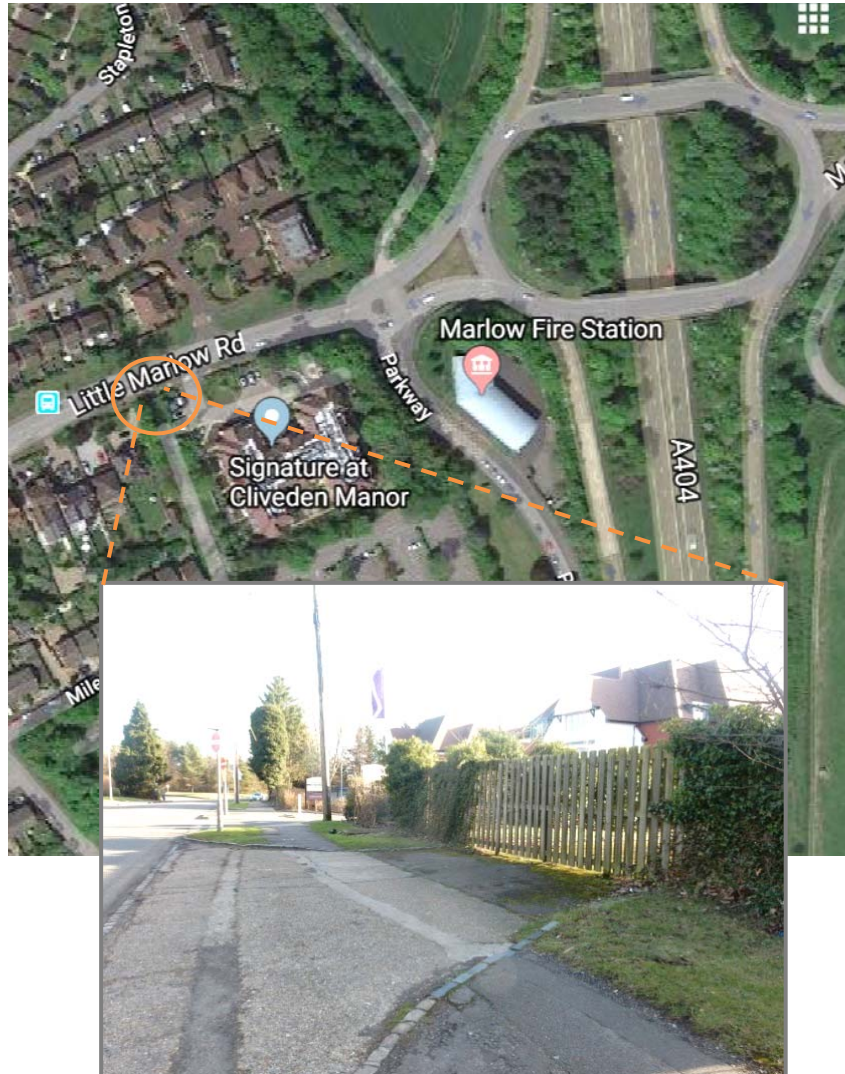
Different land levels by the Fire Station mean that some services and utilities will need to be lowered or relocated as part of the build.

This measure will also help fire engines to access the interchange more quickly.

What we would like to know:

- Your thoughts on the introduction of a new slip road around the Fire Station to enhance access to Parkway.

Measure 3: **Access on the A4155 for Marlow International site**



There is currently a closed-off access to Marlow International from the A4155 (next to the care home).

Reopening this access would help reduce traffic pressure on Parkway.

As part of the detailed design we need to consider if this access is an entrance only, an exit only or a 'tidal' system at certain times of the day.

What we would like to know:

- Your thoughts on opening access on the A4155 to Marlow International.
- Feedback on whether this should be **access only**, **exit only** or a **tidal system** at certain times of the day.

Future Measure: Upgrade the zebra crossing by the Britannia Pub to a signalised crossing



This measure would help improve traffic flow on the A4155 at peak school times when the crossing is very busy by controlling the times that people could cross.

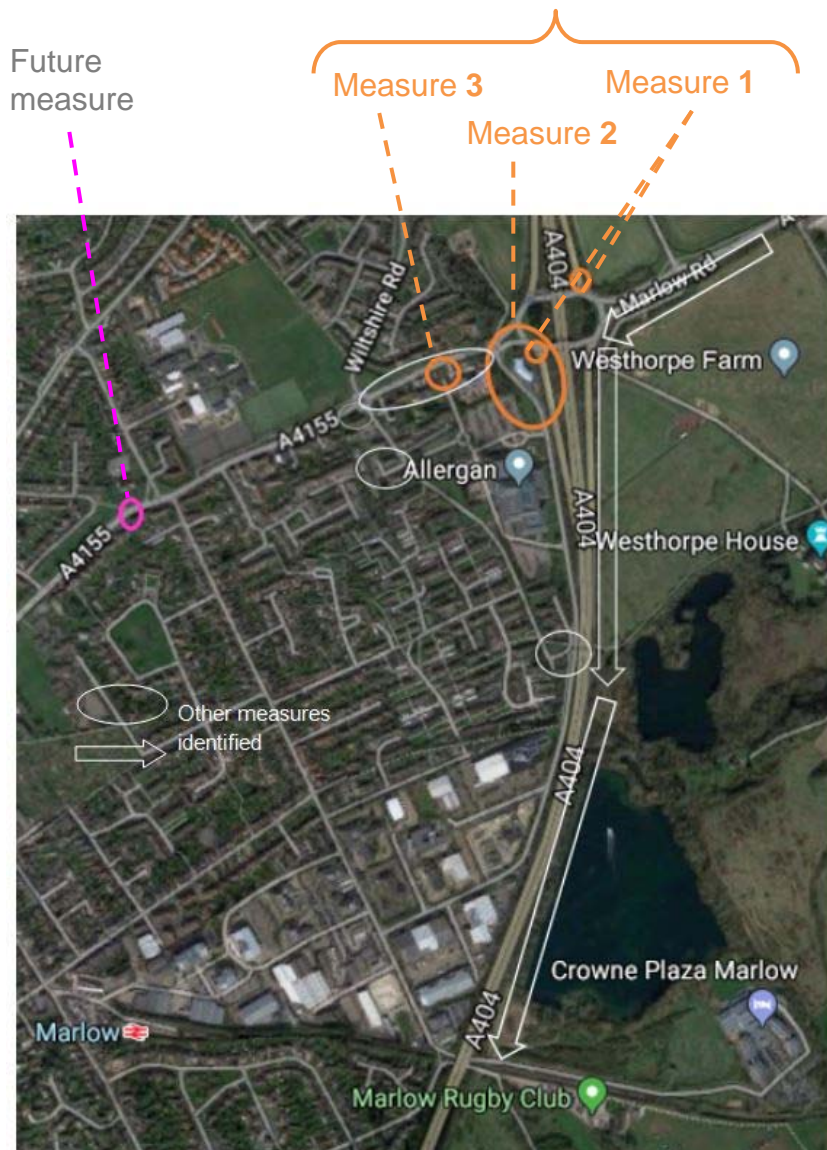
No funding has been allocated yet but could be in the future if supported.

What we would like to know:

- Your thoughts on the introduction of a signalised crossing on the A4155 by the Britannia Pub
- Feedback on whether this should be a **puffin crossing** (goes green when no more people on crossing) or a wider **toucan crossing** (enables bike-riding and pedestrian crossing at same time)



Future Measures: Have we missed anything?



The three measures in this consultation (to go forward for detailed design and costing) and the future measure, were chosen from a longer list of options identified by partners to improve traffic flow to and from Globe Business Park.

Not all measures were possible to easily deliver for a number of reasons such as land ownership, Local Plan considerations, cost, and impact on residential areas.

What we would like to know:

- Your thoughts on whether **we have missed anything** that could help improve traffic flow to and from GBP and should be looked at in the future.

Complete the survey at: www.globebusinesspark.co.uk